

Parent Questionnaire

We received a total of 194 questionnaire responses. This has been so helpful in helping us plan for home learning, for the final half term of the year. We are aware that many children will be continuing with home learning, even if we are able to move forward on a gradual return to school for some year groups. We want to do everything we can to provide you with the resources and support you need, to keep doing the amazing job you are doing teaching your children at home.

We have two winners from our prize draw for two £30 Asda vouchers:

Ngozie (Adora's mum)

Emma (Lizzie's mum)

Congratulations and thank you again to everyone who completed the questionnaire.



Parent Notice

If you are having trouble logging into any of our online learning platforms (Frog/Tapestry), please contact your child's teacher using their year team email, where you can be sent your child's login details.

Please remember, only do what you can with what you have. There is no pressure to complete an abundance of work each day. You're doing a great job!

Announcement Information

Please see below a letter from Manchester City Council.

We do not have any plans to admit children during the week starting Monday 1st June. We will keep families updated as soon as we have any definite information. In the mean time we ask all families to continue to **stay safe** and **be vigilant**.

UK Cost of the School Day at Home Survey

The Child poverty action group have recently launched two surveys (one for **parents and careers** and one for **children and young people**) to hear what families have to say about their experience of school closures. The responses we've been getting so far are helping us to understand what's happening in homes around the UK, and to identify which measures introduced by Government, local authorities or schools are working well to help children and families facing financial worries. If your family was already adversely affected financially either before Covid-19 Lockdown (or since), we would be grateful if you could complete the questionnaires provided. Thank you for your support with this.

<https://www.surveymonkey.co.uk/r/3Q92L8K>

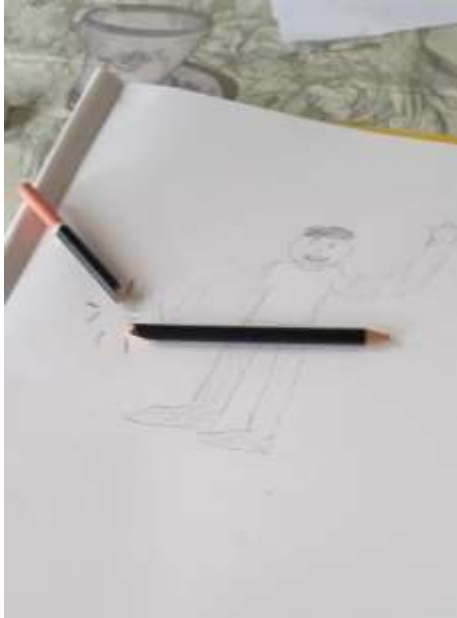
- Parents and Careers

<https://www.surveymonkey.co.uk/r/3J9BBGW>

- Children and Young people

Home learning

Lots of children have been extremely busy getting on with their home learning packs and online learning resources. Below you can find some examples of the amazing work that children at Lily Lane have been doing. If your child has completed some work that you or they are proud of, send it to their teacher using their year group email.



Hannah has been working hard completing lots of fine motor challenges at home over the last few days. Well done Hannah, you're doing an excellent job!



Joseph in 6C has been completing his Lockdown SATs over the last week and has produced some fantastic artwork. Keep up the great work Joseph.

Tobias in 2J is enjoying having lots of time to read all of his favourite books at home and has been doing lots of learning. Fantastic work Tobias, keep it up!



Lyla in 4S has been working hard in maths, focusing on length and perimeter. Well done Lyla, you're doing a fantastic job, keep up the great work!



Ellis in 2J is learning about the solar system in science and has made his very own rocket, with detachable parts, just like a real rocket! I am impressed Ellis, this is amazing!

Ava in 1H has been completing lots of her home learning challenges over the last week and has also been helping out in the garden doing some planting! You look like you're having a great time Ava.

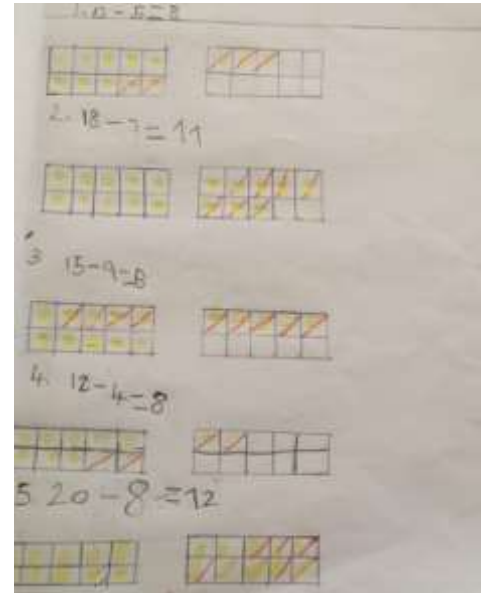


Craig has been finding out about the types of transport people use near his house, great counting and recording with this fantastic tally chart. Keep it up Craig!



Kaja in 2J has also made a rocket at home last week and it is huge! You look like you have spent a lot of time making this Kaja and it looks fantastic!

Emily in 1E has been working really hard with her home learning and has particularly impressed Miss Ernest with her maths work. Well done Emily, keep up the great work!



Daniel in 6L has been completing his Lockdown SATs this week and has incorporated household items into his art work! This looks great Daniel.



Sunny in 6B has completed the Lockdown SATs hairstyle challenge and has done a fantastic job! Well done Sunny, I love your new look!



Yuri in 1H has been busy at home taking part in lots of home learning activities and he has also completed a story board. Well done Yuri, this looks fantastic!

There are so many great pieces of home learning being sent in each day. Don't worry if you haven't seen your contributions on the newsletter yet - they will be on soon!

Position Statement – Manchester City Council May 15th 2020

Last Sunday the Prime Minister announced that from week commencing 1 June at the earliest the Government is aiming to increase the numbers of children attending primary schools through the return of children in Nursery, Reception and Years 1 and 6.

He also asked that secondary schools provide some face to face contact with staff for students in Years 10 and 12 before the end of the summer term, and that special schools work towards a phased return of more children, without a focus on more specific year groups.

This is of course all dependent on the rate of infection for COVID-19 from now until then.

This announcement from the Prime Minister and subsequent guidance from the Government has answered some questions, but it is clear there are many things which still need clarification before schools and colleges can substantially increase the numbers attending.

There are many practical questions which we currently do not have answers to and which we are working together with schools, settings, colleges and the DFE to resolve.

In Manchester, during the COVID-19 lockdown period, the majority of schools have remained open to vulnerable pupils and children of key workers - including throughout what should have been school holidays and Bank Holidays - and all schools and colleges have retained contact and an overview of all their pupils.

Throughout this time, officers from the council have been working with education leaders to support them with their current offers both for vulnerable and key workers' children who are still attending, and for the many more who are learning from home. These offers will continue as we move forward from June 1.

As we move forward into this next phase the council will continue to support settings, schools and colleges to plan a response to the announcement and begin to gradually increase the numbers of children and young people attending in a way that is safe for everyone.

There are many specific considerations unique to individual schools, settings, and colleges, which they themselves are best placed to understand and plan for. This includes the different needs of their cohorts of children or young people and local communities, the size and shape of buildings, and the numbers of staff that are available to work.

This means there cannot be a uniform approach across the city in response to the government announcement, and settings, schools and colleges will have to develop their own flexible plans and work at their own pace from 1 June in order to start to safely and gradually increase the number of children attending at any one time. We're very clear also that in any plan the safety of pupils and staff must be absolutely paramount.

For this reason, in our primary schools it is highly unlikely that children in the government identified priority year groups will be able to attend school full-time from June 1, and may also mean that some schools have to prioritise certain year groups, and not make an offer to them all. Your school will of course be in touch with you to provide you with more information about their plan for a phased return of additional children.

It is also clear that any return for children and young people will not look the same as before COVID19. The pandemic has changed things for all of us and there will need to be consideration of how we best support our children and young people at this time with a focus on their mental health and emotional wellbeing as well as their learning.

This pandemic has brought with it stress, uncertainty, and anxiety for all of us including our children and young people. We all want to get our children and young people back into education as soon as safely possible where they can be with their friends, their teachers, and their support workers. We want to reassure you that everyone in Manchester's education community is working together as hard as they can during this time to ensure the wellbeing and safety of our children and plan for this first phase of wider opening.

Amanda Corcoran Director of Education

Paul Marshall Strategic Director Children and Education Services

Councillor Garry Bridges Executive Member Children's Services

Lisa Vyas Chair of Primary Strategy Group

Gill Houghton Chair of High School Heads Group

Rob O'Hara Chair of Special School Heads Group

Peter Mulholland Chair of Post 16 Reference Group