



Newsletter

Issue: N/003

Friday 20th May 2016

Trip to Etihad Stadium

On Tuesday 17th May, 14 of our Lily Lane children attended a sport inspired event at the Etihad Stadium with Miss McVey and Miss Cresswell. The children spent the whole day taking part in different sports activities such as dodgeball, volleyball, netball, and much more. The children thoroughly enjoyed the day and are looking forwards to sharing their new sports skills with their classmates.



Science Week

Throughout this week, all classes have been very busy taking part in different science activities and experiments; some of which will continue into next week. Our vertical garden is now underway and a big thank you to the parents and carers who gave up their time this week to make it possible. Thank you as well to the Eco-committee who have also been involved in the development of the area. The children have been working hard on designs for the vertical garden competition, winners of which will be announced next week!





Netball

Last night, two teams from year 5 and 6 represented Lily Lane Primary in the second heat of the North Manchester netball competition. Even though the weather was against them, they showed real determination and played brilliantly. The two teams are now eagerly awaiting the final results.

PSHE lessons

As part of our PSHE lessons next half term, children will be finding out about different careers available to them when they grow up. We hope that this will help develop our pupils' aspirations and broaden their horizons to the opportunities that are out there for them.

We are hoping to enlist a team of parents who would be willing to come into school in the first week back after the half term holiday (6th - 10th June) to talk to the children about their jobs. If you could spare some time (no more than an hour) during this week to go into a class and talk to the children, please fill in the form, which will be sent out on Monday, and return to your child's teacher.

Getting to school on time

We have been very impressed with how many children are getting to school on time this week and how calmly and sensibly they are entering the building.

The best classes at getting to school on time are:

Year Group	Class	Late's
EYFS & KS1	2B	0
	RH and RM	1
KS2	5B and 5S	0

The top 5 classes for attendance this week are:

	Class	Attendance %
1	6L	98.8%
2	2F	98.3%
3	5S	97.9%
4	3G	97.5%
5	RM	97.1%

The Big Debate

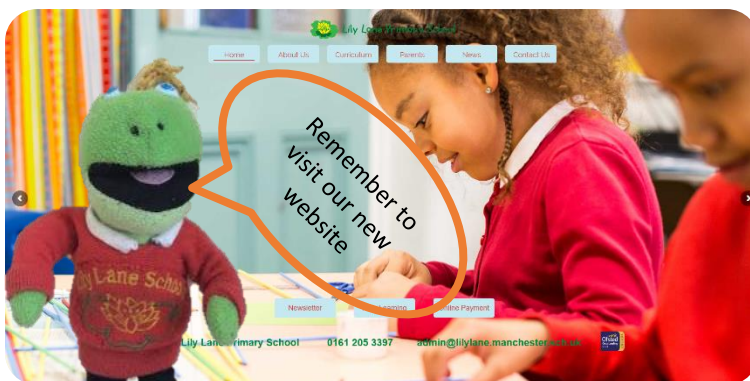
As part of our science week focus we will be holding a debate with YR2 and key stage 2 children.

You might like to discuss it with your child at home .

The debate question is:

" Should we dig up some of our playground and plant more trees?"

This question will be debated in assembly on Wednesday.



www.lilylane.manchester.sch.uk

Spotted

The spottiest classes this week were:

KS1 RH with 49

KS2 4M with 23

